



SUPERSPORT 2022

ACCESSORIES CATALOGUE



MAKE YOUR HONDA TRULY YOURS

What better way to make your Honda truly yours than adding Honda Genuine Accessories? For extra luggage capacity, improved comfort, rugged protection, enhanced performance or just a better looking bike, we've got everything covered. Built with the same attention

to detail as your Honda, supported by a 2-year warranty*, our accessories will perfectly suit your bike, adding to its value.

Ask your local Honda Dealer how to make your Honda Supersport bike truly yours.



CONTENTS



| | |
|-------------------------------------|----|
| CBR1000RR-R FIREBLADE SP NEW | 04 |
| CBR1000RR-R FIREBLADE NEW | 04 |
| CBR650R UPDATED | 12 |
| CBR500R NEW | 20 |

*2-year warranty only applicable to genuine accessories. Special conditions apply to accessories developed with Honda partners. Ask your local Honda dealer for more information.

CBR

FIREBLADE



ACCESSORIES

CBR1000RR-R



**NEW
MODEL**

DID YOU KNOW?

The Blade that changed how sport bikes were built

Aiming to create a high-performance motorcycle that could defeat its own RVF750 in Endurance Road Races, Honda developed an R&D project that led directly to the CBR900RR in 1992. With 128 HP, it was not the most powerful of its time however thanks to a dry weight of 185 kg when all rivals were well over 200 kg the Fireblade was so easy to control that it seemed to read its rider's mind. Now 30 years on, the most powerful and nimble Honda bikes keep carrying the Blade legacy.

The CBR900RR
Fireblade that
started all.



CBR
FIREBLADE



HRC OIL FILLER CAP

08F81-MKR-D10

Made of high-quality, precision-cut aluminium, this red anodised filler cap features a laser-etched HRC logo on both sides. The inside has been hollowed out to both increase strength and reduce weight. For circuit riding, the cap also features the same wire-lock hole used on HRC works machines

PERFORMANCE



CARBON UNDER COWL

08F73-MKR-D10

The Carbon Under Cowl is made from the same lightweight, high-strength Carbon Fibre used on the RC213V-S MotoGP machine. In addition to reducing the weight of the Fireblade, the intense matt finish increases its racing appeal.

Follows the same shape as the standard part but moulded in one piece and 25% lighter.



CARBON FRONT FENDER

08F71-MKR-D10

Made from the same lightweight, high-strength Carbon Fibre used on the RC213V-S MotoGP machine, the Carbon Front Fender reduces the Fireblade's unsprung weight. Follows the same shape as the standard part but is 38% lighter.



CARBON REAR HUGGER

08F70-MKR-D10

Made from the same lightweight, high-strength Carbon Fibre used on the RC213V-S MotoGP machine, this Carbon Hugger reduces the Fireblade's unsprung weight. It follows the same shape as the standard part but is 10% lighter.



REAR SEAT COWL

08F75-MKR-D10ZA or D102B / 08F70-MKR-D90ZA

Make your Fireblade a racing bike look-alike, with this stylish Single Seat Cowl while also providing a 120 gram weight reduction. Replaces the pillion seat with simple installation (cannot be used in conjunction with the Rear Seat Bag). Space available under the cowl to install a GPS logger (GPS operation not guaranteed).

3 colours available:

D10ZA: Red *R380* / D102B: Black *NHB01* / D90ZA: Blue *PB395M*

& DESIGN



QUICKSHIFTER

08U73-MKR-D10

The Quickshifter communicates shift pedal inputs to the ECU. In return, the ECU removes the load from the transmission and allows seamless upshifts downshifts without operating the clutch. The Quickshifter auto-blip functionality guarantees smooth and instantaneous down-shifts, contributing to a stress-free experience for both sporty and long-distances riding. For Fireblade RR-R version only.



CARBON AIRBOX COVER

08F74-MKR-D10

Made from the same lightweight, high-strength Carbon Fibre used on the RC213V-S MotoGP machine. The Carbon Fibre Airbox is the same shape and size as the standard part but 25% lighter.



WHEEL STRIPES SET - TRICOLOUR

08F79-MKR-D10ZA

The Wheel Stripe set adds to the racing inspired styling of the Fireblade with the inclusion of the HRC logo.



FRAME SLIDERS SET

08P71-MKR-D10

Incorporating feedback from the RC213V works machine, these Frame Sliders can be mounted to the engine hanger bolts for increased bodywork protection.



SPROCKET PROTECTOR

08P77-MKR-D10

Preventing objects from getting caught in the sprocket, this heavy-duty cover provides protection without impairing the bend of the swingarm. Designed to conform to circuit regulations, it also increases the Racing appearance of the Fireblade RR-R.



CBR TANK PAD

08P82-MKR-D10

Shaped to match the curves of the Fireblade's tank, this Pad protects the paint from scratches. Flexible and sporty with its carbon-pattern material, the Tank Pad features the CBR logo and is available in Black.

PROTECTION ▲

COMFORT ▼



HIGH WINDSCREEN

08R70-MKR-D10ZA / 08R71-MKR-D10ZA

Developed after wind-tunnel and real-world riding sessions, the High Windscreen combines increased wind protection and improved motorcycle control. Compared to the standard version, the top of the wind screen is 8mm higher and 40mm further forward.

2 versions available:

- 08R70: Smoked
- 08R71: Clear



ALCANTARA RIDER SEAT

08R72-MKR-D10

Made of luxury Alcantara to provide outstanding soft feel and superb breathability, the Special Seat helps to improve riding comfort. Protected with a water repellent finish, the beautiful matt texture of this seat and the CBR branding increase the premium feel of the Fireblade.



USB POWER SOCKET

08ESY-MKR-USB

Based on a convenient type-C connector, this socket automatically determines the optimal charging voltage for connected devices. It comes with a cap preventing dirt or water ingress while not in use. For Installation under the pillion seat, attachment included.



LUGGAGE



REAR SEAT BAG

08L72-MKR-D10

This Rear Seat Bag has an adjustable capacity of 15 litres up to 22 litres and features convenient zipped pockets on each side with a carrying handle. Replacing the pillion seat, its base with fasteners keeps the bag securely attached at all times and a rain cover protect your personal items from the elements.

Maximum Load capacity: 4kg



TANK BAG

08L71-MKR-D10

The Honda Genuine design of this tank bag perfectly matches the Fireblade's tank shape to provide a 7 litre capacity without impairing the handling of the Fireblade. Features a clear pocket at the top of the bag, a carrying handle and rain cover to make the tank bag suitable for all conditions.

Maximum Load capacity: 2kg.



INDOOR BODY COVER

08M72-MKR-D10

Featuring CBR branding and made of a smooth, stretchable material, the bespoke cut of this black Body Cover fits the Fireblade RR-R perfectly and will protect it during storage. Designed for indoor use only (not waterproof).

MAINTENANCE

CBR
FIREBLADE

ACCESSORIES PACKS

| | CARBON PACK | RACING PACK (RED) | SP RACING PACK (RED) | SP RACING PACK (BLACK) | SP RACING 30 TH ANNIVERSARY | TOUR PACK |
|--------------------------|------------------|----------------------|-------------------------|---------------------------|---|------------------|
| | 08HME-MKR-CARBON | 08HME-MKR-RR | 08HME-MKR-SPRR | 08HME-MKR-SPRB | 08HME-MKR-SPR30 | 08HME-MKR-SPTOUR |
| Carbon Front Fender | • | • | • | • | • | |
| Carbon Airbox Cover | • | • | • | • | • | |
| Carbon Under Cowl | • | • | • | • | • | |
| Carbon Rear Hugger | • | • | • | • | • | |
| Rear Seat Cowl - Red | | • | • | | | |
| Rear Seat Cowl - Black | | | | • | | |
| Rear Seat Cowl - Blue | | | | | • | |
| HRC Oil Filler Cap | | • | • | • | • | |
| Quickshifter | | • | | | | |
| Frame Sliders Set | | • | • | • | • | |
| Sprocket Protector | | • | • | • | • | |
| Special Seat - Alcantara | | | | | | • |
| USB Power Socket | | | | | | • |
| Tank Bag | | | | | | • |
| Rear Seat Bag | | | | | | • |

CBR
650R



ACCESSORIES

CBR650R



UPDATED

DID YOU KNOW?

What does HSTC means?

Since 1999 with the ST1100 Pan European, Honda have equipped more and more of its motorcycles with a system called Honda Selectable Torque Control (HSTC). This system constantly monitors the speeds of the front and rear wheels via speed sensors incorporated into the Anti-Lock Braking System (ABS). When the rear wheel begins to rotate significantly faster than the front, the systems reduces fuel delivery to the engine, limiting rear-wheel slippage. In 2019 with the new CBR650R, Honda applied this technology to its mid-displacement Supersport motorcycle for the first time.



The CBR650R
in action.

CBR
650R



TANK PAD (CBR LOGO)

08P82-MKR-D10

Arrow shaped grey tank pad featuring the CBR logo. Helps to protect tank paintwork from scratches and rubbing.

PROTECTION



WHEEL STRIPES SET - RED

08F84-MFJ-820A

3-piece Wheel stripes for easy application and a perfect fit on both 17-inch wheels. Honda Racing logo also included.



QUICKSHIFTER

08U72-MKN-D50

By measuring the intensity of the shifting input, the Quickshifter enables the rider to change gear without the need to operate the clutch lever or shut the throttle. The system aids up-shifting, maximising the riding experience.



REAR SEAT COWL

08F72-MKN-D50ZA or D50ZB

Add the final racing touch to your CBR650 with this colour-matched rear seat cowl. For a more unique look, an Aluminium insert is also available to combine with the seat cowl (sold separately). 2 colours available:

- Grand Prix Red "R-380" (D50ZA)
- Mat Gunpowder Black Metallic "NH-436M" (D50ZB)

PERFORMANCE & DESIGN



ALUMINIUM FRONT FENDER PANELS

08F73-MKN-D50

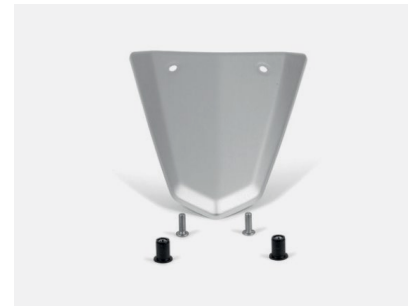
Pair of high quality aluminium panels designed to fit the front fender of the CBR650R.



ALUMINIUM SIDE PANEL

08F75-MKN-D50

A pair of high quality aluminium side panels to add a touch of style to your CBR650R.



ALUMINIUM SEAT COWL INSERT

08F76-MKN-D50

High quality aluminium insert that can be added to the rear seat cowl to further enhance the premium look of the CBR650R.

(Rear Seat Cowl sold separately)



TANK BAG

08ESY-MKJ-TKB18

Functional 3-litre Tank bag specifically designed to not interfere with the handling of the CBR650. Features a clear pocket on top for easy smart phone storage and includes a Rain cover to protect your belongings in all conditions.



REAR SEAT BAG

08ESY-MKJ-STB18

A simple and functional rear bag specifically adapted to the tapered shape of the CBR650R's rear seat. Easy and stable mounting is ensured thanks to the specific attachment kit provided. It's 15 Litre storage capacity expandable to up 22 Litres and a Rain cover included.

LUGGAGE ▲

COMFORT ▼



HIGH WINDSCREEN

08R70 or 08R71-MKN-D10

Replacement screen offering additional wind protection without compromising visibility. 2 variants available:

- Clear (08R70)
- Smoked (08R71)



HEATED GRIPS

08ESY-MKN-HG19B

The extremely slim heated grips provide 360° heat distribution with 3-step variable heating levels. Features a built in control for maximum rider comfort and the integrated circuit protects the battery from draining.



Location photos show 19YM

SECURITY & MAINTENANCE



REAR MAINTENANCE STAND

08M50-MW0-801

Tilting tubular steel stand that eases cleaning and rear wheel maintenance. Lifts the motorcycle by the end of its swingarm.



U-LOCK

08M53-MFL-800

U-Lock with a tamper-resistant barrel.



OUTDOOR MOTORCYCLE COVER

08P34-BC2-801

A water-resistant and breathable cover that allows your bike to dry whilst covered. Protects the paintwork from UV rays and features two security holes for attaching a lock while the bike is covered.

CBR
650R



ACCESSORIES PACKS

| PACKS | SPORT (RED) | SPORT (BLACK) | COMFORT | TRAVEL |
|---------------------|------------------|------------------|-----------------|-----------------|
| CONTENT | 08HME-MKY-SP21ZR | 08HME-MKY-SP21ZB | 08HME-MKY-CO21R | 08ESY-MKJ-BAG18 |
| Quickshifter | • | • | | |
| High Windscreen (*) | • | • | • | |
| Seat Cowl | • | • | | |
| CBR Tank Pad | • | • | | |
| Heated Grips | | | • | |
| Tank Bag | | | | • |
| Rear Seat Bag | | | | • |

(*) Smoked Windscreen for Sport Packs /
Clear Windscreen for Comfort Pack

CBR
500R



ACCESSORIES



**NEW
MODEL**

DID YOU KNOW?

Is reliability supposed to be boring?

It's not rare to find some CB500s proudly boasting more than 180,000 miles but the long-time favourite of the couriers and the driving school is much more than just a workhorse. Beginning in France in 1996, the CB500 Cup spread across Europe quickly. Since 2014, it is the CBR500R that young talents try to make a name by themselves on a budget. Sebastien Charpentier or James Toseland, to name a few, started there.



The CBR500R Cup.

CBR
500R



REAR SEAT COWL

08F76-MJW-J00ZC or J00ZR

Replaces the standard passenger seat for a more aggressive look.

Available in 2 colours to perfectly match your CBR500R.

- Mat Gunpowder Black Metallic (J00ZC)
- Grand Prix Red (J00ZR)

DESIGN



12V SOCKET

08U70-MJW-J00

Power or charge electrical equipment using this convenient 12V Socket.



HIGH WINDSCREEN (SMOKED)

08R70-MKP-D00ZA

Smoked windscreen which is higher than the standard version to provide increased wind protection.



HEATED GRIPS

08ESY-MKP-GHR22

The extremely slim heated grips provide 360° heat distribution with 3-step variable heating levels. Features a built in control for maximum rider comfort and the integrated circuit protects the battery from draining.

COMFORT ▲

LUGGAGE ▼



REAR SEAT BAG

08ESY-MKP-RRSEAT

Functional Rear Seat Bag which provides a capacity of 15 Litres that can be expanded up to 22 Litres. Easy to attach and perfectly stable thanks to its specific attachment and also includes a rain cover to protect your belongings in all conditions.



TANK BAG

08ESY-MKP-TKB19

Functional 3-litre Tank bag specifically designed to not interfere with the handling of the CBR500R. Features a clear pocket on top for easy smart phone storage and includes a Rain cover to protect your belongings in all conditions.



35 LITRE TOP BOX PACK

08ESY-MKP-TB19

This Pack includes a 35 Litre Top Box and all the components needed to install it on the bike (Rear Carrier and Top Box base). Also includes the specially designed inner bag for everyday riding convenience.



TANK PAD (CBR LOGO)

08P71-MKF-DK0

Arrow shaped grey tank pad featuring the CBR logo. Helps to protect tank paintwork from scratches and rubbing.



TANK PAD (HONDA WING LOGO)

08P61-KYJ-800

3-piece adhesive-backed tank pad in a carbon fibre effect and featuring the Honda Wing. Helps to protect tank paintwork from scratches and rubbing.

PROTECTION



CBR
600F4i



U-LOCK

08M53-MFL-800

U-Lock with a tamper-resistant barrel.



OUTDOOR MOTORCYCLE COVER

08P34-BC2-801

A water-resistant and breathable cover that allows your bike to dry whilst covered. Protects the paintwork from UV rays and features two security holes for attaching a lock while the bike is covered.

SECURITY & MAINTENANCE

ACCESSORIES PACKS

| COMFORT | |
|------------------------|---|
| 08HME-MKP-CR22 | |
| Smoked High Windscreen | • |
| Heated Grips | • |
| 12V Socket | • |







The specific details of this brochure do not apply to any particular product supplied or offered for sale. Manufacturers reserve the right to vary specifications, including colours, with or without notice at such times in such manner as deemed appropriate. Major as well as minor changes may be involved. Every effort, however, is made to ensure the accuracy of the particulars contained in this brochure. Consult your Dealer for details regarding the specifications of any featured product. This publication shall not constitute - under any circumstances whatsoever - an offer by the Company to any individual. All sales are made by the Distributor or Dealer subject to and with the benefit of the standard Conditions of Sale and Warranty provided by the Distributor or Dealer, copies of which may be obtained upon request. While efforts are made to ensure specification accuracy, brochures are prepared and printed several months in advance of distribution and consequently cannot always immediately reflect either changes in specification or in some isolated cases the provision of a particular feature. Customers are always advised to discuss specific details with the supplying Dealer, especially if a selection is dependent upon one of the features advertised. Please contact your local dealer for information and specifications. Please note that the fuel consumption figures provided are results obtained by Honda under standardised testing conditions prescribed by WMTC. Tests are conducted on a rolling road using a standard version of the vehicle with only one rider and no additional optional equipment. Actual fuel consumption may vary depending on how you ride, how you maintain your vehicle, weather, road conditions, tyre pressure, installation of accessories, cargo, rider and passenger weight, and other factors. You accept that if you do go ahead and make a purchase or enter into any kind of transaction, whether for payment or not, you did so entirely in reliance on your own skill and judgement and not on that of anyone else.

RIDE WITH STYLE Read the owner's manual thoroughly. Get to know your machine and its capabilities. Concentration assists anticipation. Observe other road users' movements. Brake in plenty of time. Always wear a helmet and quality kit, ride fit and NEVER after drinking alcohol. Good roadcraft and courtesy identify the skilled and stylish rider. Honda endorse the law that all helmet visors must comply with BS 4110. Visors that transmit less than 50% of visible light cannot legally be used on the road.

Honda (UK) - Motorcycles

Cain Road, Bracknell, Berkshire, RG12 1HL England

honda.co.uk



Please don't bin me.
Pass me on to a
friend or recycle me.

Honda Motor Europe sources
paper responsibly from
manufacturers within the EU.



**BLUE SKIES FOR
OUR CHILDREN**