



ADVENTURE 2022
ACCESSORIES CATALOGUE

MAKE YOUR HONDA TRULY YOURS

What better way to make your Honda truly yours than adding Honda Genuine Accessories? For extra luggage capacity, improved comfort, rugged protection, enhanced performance or just a better looking bike, we've got everything covered. Built with the same attention to detail as your Honda, supported by a 2-year warranty*, our accessories will perfectly suit your bike, adding to its value. Ask your local Honda Dealer how to make your Honda Adventure bike truly yours.



*2-year warranty only applicable to genuine accessories. Special conditions apply to accessories developed with Honda partners. Ask your local Honda dealer for more information.

CONTENTS



AFRICA TWIN ADVENTURE SPORTS	04
AFRICA TWIN	16
X-ADV 750	28
NC750X	36
CB500X	44
CRF300L / RALLY	52

**Africa
Twin**



ACCESSORIES

CRF1100L AFRICA TWIN



ADVENTURE SPORTS

DID YOU KNOW?

Honda NXR 750 Paris-Dakar

The NXR750 dominated the Paris-Dakar Rally from 1986 to 1989, winning the trophy 4 years in a row. Back then, the 22 day race started in Paris and ended in Dakar, Senegal crossing nearly 9,000 miles of African desert. Gilles Lalay won the 1989 Paris-Dakar Rally on this motorcycle with its distinctive Rothmans livery.





42L ALUMINIUM TOP BOX

08ESY-MKS-LGALU

Made of strong and light aluminium, this 42 Litre top box can store one full face helmet and comes with a backrest and the Honda 1-Key System. Designed to be installed directly onto the rear carrier of the Africa Twin Adventure Sports.



58 LITRE PLASTIC TOP BOX PACK

08ESY-MKS-LGPL

With a large capacity of 58 litres, this plastic top box can store up to two full-face helmets and its special lock allows the lid to be secured without using the key. It comes with a Backrest, Honda 1-Key System and the base to fit directly onto the rear carrier of Adventure Sports. Maximum load weight: 6 kg

Also available with specific Africa Twin Graphics.
(See design section on Page 12)



35LITRE TOP BOX PACK

08ESY-MKS-LG35

35 Litre Top Box made from durable plastic with the Honda 1-Key System allowing the top box to be operated using the main ignition key. Top box base, key system and backrest are all included.



INNER BAGS FOR PLASTIC LUGGAGE

08L81-MKS-E00

Inner Bag specifically designed to fit the 58 litre Plastic Top Box. It is fully waterproof and equipped with straps which also allow it to be attached directly to the motorcycle. The addition of a shoulder strap also makes it easy to carry.

08L83-MKS-E00

Inner bag designed to comfortably fit both Plastic Panniers. Same specifications as the plastic Top Box Inner bag.

LUGGAGE



ALUMINIUM PANNIER SET

08ESY-MKS-PNALU

Made of strong and light aluminium, this set includes two panniers offering a capacity of 33 litres on the right side and 37 litres on the left. Includes an Aluminium stay, the Honda 1-Key System and designed to fit directly to the rear carrier of the Africa Twin Adventure Sports.

Maximum load weight for each pannier: 10 kg



PLASTIC PANNIER SET

08L71-MKS-E00

Specifically designed for simple installation, this set of 2 panniers are suitable for adventure touring thanks to their highly durable shell. The right-side pannier has a capacity of 30 litres with a 40 litre capacity on the left side. Both panniers are equipped with a security lock and the Honda 1-Key System. Maximum load capacity per pannier: 6 kg

Also available with specific Africa Twin Graphics.
(See design section on Page 12).



INNER BAGS FOR ALUMINIUM LUGGAGE

08L82-MKS-E00

Inner Bag specifically designed to fit the Aluminium Top Box. It is fully waterproof and equipped with straps which also allow it to be attached directly to the motorcycle. The addition of a shoulder strap makes it easy to carry.

08L84-MKS-E00

Set of two Inner Bags specifically designed to fit both aluminium panniers. Same specifications as the Top Box Inner Bag.



INNER BAG FOR 35 LITRE TOP BOX

08L75-MJP-G51

Black nylon bag with embroidered Honda Wing logo and red zippers. Expandable from 15 to 25 litres and comes with a carrying handle & adjustable shoulder strap.



4.5 LITRE TANK BAG

08L85-MKS-E00

Thanks to its transparent pocket, this waterproof Tank Bag is the perfect solution to store a smartphone and connect it to the USB port of the motorcycle (connectors not included). A one-touch buckle and magnet keeps the Tank Bag firmly attached to the bike.
Maximum load weight: 1.5 kg



3 LITRE TANK BAG

08L89-MKS-E00

This light and compact Tank Bag features a transparent pocket and is ideal to store small personal items while riding. Unnoticeable while steering the bike, this Tank Bag is firmly attached thanks to a one-touch buckle and magnet.
Maximum load weight: 1.5 kg. Rain Cover included.

LUGGAGE





FRONT LED FOG LIGHTS KIT

08ESY-MKS-FL20

Set of 2 additional LED headlights (11W) with all necessary components for fitment to the Front Side Pipe (Sold Separately). These lights provide increased visibility for the rider and assists in making them more noticeable to surrounding traffic. Operated directly with the handlebar switch and signalled on the TFT monitor when activated.



VISOR SET

08R73-MKS-E20

Specially designed for Adventure Sport models and featuring the CRF logo, these visors improve rider comfort by reducing the travelling air around the rider's arms and shoulders.

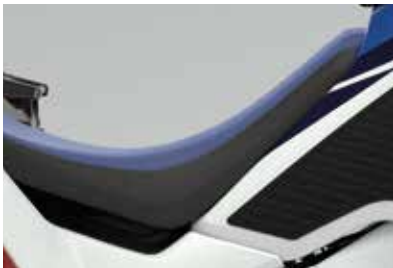


DEFLECTOR SET

08R71-MKS-E20

The deflector set improves comfort by reducing traveling air around the rider's waist and knees.

COMFORT



LOW SEAT

08R73-MKS-E00ZA, E00ZB or E00ZC

The Low Seats reduce the seat height by 25mm. Depending on the position selected, the result is a seat height of 825 or 845mm.

Seats are colour matching with the unit:

- Red versions (E00ZA)
- Tricolour versions (E00ZB)
- Black versions (E00ZC)



HIGH SEAT

08R70-MKS-E20ZB or E20ZC

The High Seats increase the seat height by 25mm. Depending on the position selected, the result is a seat height of 875 or 895mm.

Seats are colour matching with the unit:

- Tricolour and Black versions (E20ZB)
- Red versions (E20ZC)



COMFORT PILLION FOOT PEGS

08R71-MJP-G50

Deluxe pillion Foot Pegs made of aluminium which are wider than the standard pegs and provide increased comfort for a pillion.





FRONT SIDE PIPE WITH ATTACHMENT

08ESY-MKS-L2FR

Providing a strong Adventure look, the Front Side Pipe improves the protection of various body panels. Made of stainless steel and finished with electrolytic polishing, it is resistant to corrosion and easy to clean.



ENGINE GUARD WITH ATTACHMENT

08ESY-MKS-ENG

The Engine Guard improves protection of the engine and the lower part of the bike. Made of stainless steel and finished with electrolytic polishing, it is resistant to corrosion and easy to clean.



RADIATOR GRILLS

08F71-MKS-E00

Made of stainless steel and featuring the CRF logo, the Radiator Grills increase the Africa Twin's tough image. The original mesh pattern combines cooling capability with protection against stone damage to the radiators.

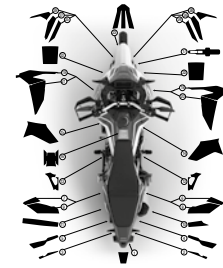
PROTECTION



SIDE TANK PADS

08R75-MKS-E20

Featuring a CRF logo, these reinforced pads are specifically designed to fit the shape of the tank. They protect the paint against scratches and give the rider better control when in a standing position.



PROTECTIVE STICKER SET

08ZAR-LOD-004CFSP

Improve the protection of the Africa Twin's body and the engine with this set of protective die-cut stickers.



RALLY STEPS SET **08R79-MKS-E00**

With their aggressive spike shape and a 57% larger surface area than standard, these rally steps improve control during off-road riding.



DCT SHIFT PEDAL **08U70-MKS-E50**

This kit enables the rider to change gear in the traditional 1 down - 5 up format by using the left foot. It works alongside the handlebar shift triggers giving the rider the choice of using either of them at any moment. (For DCT Version only).



QUICKSHIFTER **08U70-MLG-E00**

The quickshifter enables the rider to change gear without operating the clutch lever or shutting off the throttle. The system works for upshifting and downshifting, maximising the riding experience. (For Manual Transmission version only).

PERFORMANCE & DESIGN



WHEEL STRIPES SET **08F70-MKS-E20ZE or E20ZD**

Available in 2 colours to match the colour scheme of the Adventure Sports, these wheel stripes improve the design and add some protection to the rims. Each set includes 2 pieces for each wheel. Recommended application:

- Tricolour version (E20ZD)
- Black version (E20ZE)



58 LITRE TOP BOX WITH STICKERS **08ZAR-LOD-001GTOP**

Improve the design of your Top Box by adding this exclusive sticker kit for Africa Twin. Top Box comes with the sticker kit already applied. (Stickers also available separately).



PLASTIC PANNIERS WITH STICKERS **08ZAR-LOD-002GPAN**

Improve the design of your panniers by adding this exclusive sticker kit for Africa Twin. Panniers supplied with the stickers already applied. (Stickers also available separately).



MAIN STAND
08M70-MKS-E00

The Main Stand allows more secure parking on a variety of ground surfaces and assists with maintenance operations.





ACCESSORIES PACKS

CONTENT	SUPER PACK ALUMINIUM* 08HME-MKS-L2FLAL	SUPER PACK PLASTIC* 08HME-MKS-L2FLPL	TRAVEL PACK ALUMINIUM* 08HME-MKS-L2TRALU	TRAVEL PACK PLASTIC* 08HME-MKS-L2TRPL
42 Litre Aluminium Top Box with Base	•		•	
Aluminium Pannier Set with Stay	•		•	
Inner Bag for Aluminium Top Box	•		•	
Inner Bags for Aluminium Panniers	•		•	
58 Litre Plastic Top Box with Back Rest and Base		•		•
Plastic Pannier Set		•		•
Inner Bag for 58 Litre Top Box		•		•
Inner Bags for Plastic Panniers		•		•
4.5 Litre Tank bag	•	•	•	•
Front LED Fog Lights Kit	•	•		
Deflector Set	•	•	•	•
Visor Set	•	•	•	•
Radiator Grills	•	•		
Front Side Pipe with attachment	•	•	•	•
Engine Guard with attachment	•	•		
Main Stand	•	•	•	•

*Compatible with DCT or MT versions

Africa Twin



ACCESSORIES

CRF1100L



AFRICA TWIN

DID YOU KNOW?

Africa Twin reaches new heights

In 2017, the Africa Twin broke the record for the highest altitude reached by a twin-cylinder motorcycle. After 5 days of acclimatisation, a team of 5 five riders piloted the Africa Twin onto the slopes of the world's highest active volcano, the Nevado Ojos del Salado - located between Argentina and Chile. Reaching 5,965 metres above sea level, the international team completed its ascent within

24 hours aboard an Africa Twin specially equipped with Termignoni exhaust, revised final sprockets, new Metzeler MC360TM tyres and a range of Honda Genuine Accessories. Their route took them - in temperatures as low as minus 5 degrees Celsius - through broken asphalt, gravel, mud, sand and finally stretches of ice pockets known as 'penitentes', underlining once again the Africa Twin's credentials as the best-performing off-road motorcycle in its class.



*Africa
Twin*



42 LITRE ALUMINIUM TOP BOX WITH BASE

08ESY-MKS-LGALU

Made of strong and light aluminium, this 42 Litre top box can accommodate most full-face helmets. It comes equipped as standard with a backrest and Honda 1-Key system alongside the top box base for fitment to the rear carrier.

Maximum load weight: 6 kg



58 LITRE PLASTIC TOP BOX PACK

08ESY-MKS-LGPL

With a large capacity of 58 litres, this plastic top box can store up to two full face helmets. A special lock allows the rider to secure the lid without using the key. The Top Box base, Backrest and Honda 1-Key System are all included.

Maximum load weight: 6 kg



35 LITRE TOP BOX PACK

08ESY-MKS-LG35

35 litre Top Box made from durable plastic and able to accommodate most full-face helmets. The Honda 1-Key System allows the top box to be operated using the main ignition key.



INNER BAG FOR 58 LITRE PLASTIC TOP BOX

08L81-MKS-E00

Inner Bag specifically designed to fit the 58 litre Plastic Top Box. It is fully waterproof and equipped with straps which also allow it to be attached directly to the motorcycle. The addition of a shoulder strap also makes it easy to carry.

LUGGAGE



ALUMINIUM PANNIER SET

08ESY-MKS-PNALU

Made of strong and light aluminium, this set includes two panniers offering a capacity of 33 litres on the right side and 37 litres on the left. Includes an Aluminium stay, the Honda 1-Key System and designed to fit directly to the rear carrier of the Africa Twin Adventure Sports.



PLASTIC PANNIER SET

08L71-MKS-E00

Specifically designed for simple installation, this set of 2 panniers are suitable for adventure touring thanks to their highly durable shell. The right-side pannier has a capacity of 30 litres with a 40 litre capacity on the left side. Both panniers are equipped with a security lock and the Honda 1-Key System. Maximum load capacity per pannier: 6 kg

Also available with specific Africa Twin Graphics .

(See Luggage Section on Page 20).



INNER BAG FOR PLASTIC PANNIER

08L83-MKS-E00

Specifically designed to fit the plastic pannier shape. Same specifications as the plastic top box inner bag.



INNER BAG FOR 35 LITRE TOP BOX

08L75-MJP-G51

Black nylon bag with embroidered Honda Wing logo and red zippers. Expandable from 15 to 25 litres and comes with a carrying handle & adjustable shoulder strap.



4.5 LITRE TANK BAG

08L85-MKS-E00

Thanks to its transparent pocket, this waterproof Tank Bag is the perfect solution to store a smartphone and connect it to the USB port of the motorcycle (connectors not included). A one-touch buckle and magnet keep the Tank Bag firmly attached to the bike.

Maximum load weight: 1.5 kg



3 LITRE TANK BAG

08L89-MKS-E00

This light and compact Tank Bag features a transparent pocket and is ideal to store small personal items while riding. Unnoticeable while steering the bike, this Tank Bag is firmly attached thanks to a one-touch buckle and magnet.

Maximum load weight: 1.5 kg. Rain Cover included.

LUGGAGE



58 LITRE TOP BOX WITH STICKERS

08ZAR-LOD-001GTOP

Improve the design of your Top Box by adding this exclusive sticker kit for Africa Twin. Top Box comes with the sticker kit already applied. (Stickers also available separately).



PLASTIC PANNIERS WITH STICKERS

08ZAR-LOD-002GPAN

Improve the design of your panniers by adding this exclusive sticker kit for Africa Twin. Panniers supplied with the stickers already applied. (Stickers also available separately).



FRONT SIDE PIPE WITH ATTACHMENT

08ESY-MKS-L1FR

Providing a strong Adventure look, the Front Side Pipe improves the protection of various body panels. Made of stainless steel and finished with electrolytic polishing, it is resistant to corrosion and easy to clean.



ENGINE GUARD WITH ATTACHMENT

08ESY-MKS-ENG

The Engine Guard improves protection of the engine and the lower part of the bike. Made of stainless steel and finished with electrolytic polishing, it is resistant to corrosion and easy to clean.



RADIATOR GRILLS

08F71-MKS-E00

Made of stainless steel and featuring the CRF logo, the Radiator Grills increase the Africa Twin's tough image. The original mesh pattern combines cooling capability with protection against stone damage to the radiators.

PROTECTION



SIDE TANK PADS

08R81-MKS-E00

Featuring a CRF logo, these reinforced pads are specifically designed to fit the shape of the tank. They protect the paint against scratches and give the rider better control when in a standing position.



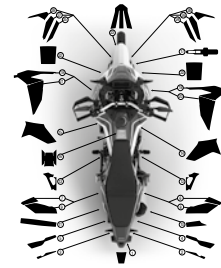
KNUCKLE GUARD EXTENSIONS

08P72-MKS-E00ZC OR E00ZD

These Knuckle Guard Extensions improve the comfort and the protection of the rider's hands.

Recommended Colours:

- Tricolour or Black model: E00ZC
- Red model: E00ZD



PROTECTIVE STICKER SET

08ZAR-LOD-003CFSP

Improve the protection of the Africa Twin's body and the engine with this set of protective die-cut stickers.



COMFORT



FRONT LED FOG LIGHTS KIT **08ESY-MKS-FL20**

Set of 2 additional LED headlights (11W) with all necessary components for fitment to the Front Side Pipe (Sold Separately). These lights provide increased visibility for the rider and assists in making them more noticeable to surrounding traffic. Operated directly with the handlebar switch and signalled on the TFT monitor when activated.



HEATED GRIPS WITH ATTACHMENT **08T72-MKS-E01**

The heated grips feature 5 temperature levels and the TFT screen updates to show when they are in use. When the ignition is switched off their most recent setting is memorised and an integrated circuit protects the battery from draining.



12V SOCKET **08U70-MKS-E00**

Installed on the control panel, this 12V Socket is ideal to power or charge electrical equipment.



HIGH WINDSCREEN

08R76-MKS-E00

Taller than the standard screen by 175 mm, the High Windscreen improves the rider's comfort by reducing the airflow around the head and arms. It directly replaces the standard windscreen and comes with a meter visor included.



VISOR SET

08R78-MKS-E00

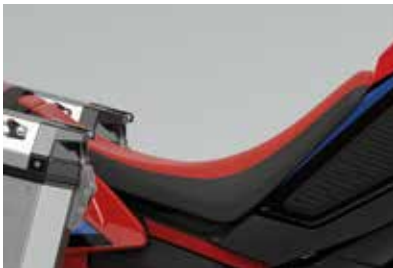
The visors improve the rider's comfort by reducing airflow pressure around the arms and shoulders.



DEFLECTOR SET

08R72-MKS-E00

The deflector set improves comfort by reducing traveling air around the rider's waist and knees.



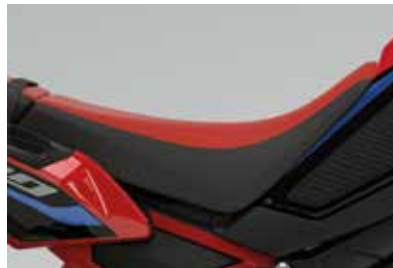
LOW SEAT

08R73-MKS-E00ZA, ZB or ZC

The Low Seat reduces the seat height by 25mm. Depending on the position selected on the motorcycle, the result is a seat height of 825mm or 845mm.

Recommended Fitment:

- Red model: E00ZA
- Tricolour model: E00ZB
- Black model: E00ZC



HIGH SEAT

08R70-MKS-E20ZB or E20ZC

The High Seat increases the seat height by 25mm. Depending on the position selected on the motorcycle, the result is a seat height of 875mm or 895mm.

Recommended Fitment:

- Black model: E20ZB
- Red model: E20ZC



COMFORT PILLION FOOT PEGS

08R71-MJP-G50

Deluxe pillion Foot Pegs made of aluminium which are wider than the standard pegs and provide increased comfort for a pillion.



RALLY STEPS SET

08R79-MKS-E00

With their aggressive spike shape and a 57% larger surface area than standard, these rally steps improve control during off-road riding.



DCT SHIFT PEDAL

08U70-MKS-E50

This kit enables the rider to change gear in the traditional 1 down - 5 up format by using the left foot. It works alongside the handlebar shift triggers giving the rider the choice of using either of them at any moment. (For DCT Version only).



QUICKSHIFTER

08U70-MLG-E00

The quickshifter enables the rider to change gear without operating the clutch lever or shutting off the throttle. The system works for upshifting and downshifting, maximising the riding experience. (For Manual Transmission version only).

PERFORMANCE & DESIGN



SMOKED WINDSCREEN

08R70-MKS-E00

Add a touch of style to your Africa Twin with the smoked windscreen screen that directly replaces the standard one (same shape and size).



WHEEL STRIPES SET

08F70-MKS-E00ZD or E40ZA

Available in 2 colours to match the colour scheme of the Africa Twin, these wheel stripes improve the design and add some protection to the rims. Each set includes 2 pieces for each wheel. Recommended application:

- For Red or Black versions: E00ZD
- For Tri-colour version: E40ZA



MAIN STAND
08M70-MKS-E00

The Main Stand allows more secure parking on a variety of ground surfaces and assists with maintenance operations.



*Africa
Twin*



ACCESSORIES PACKS

CONTENT	OFF-ROAD	OFF-ROAD	SUPER PACK	SUPER PACK	ELECTRIC	TRAVEL PACK	TRAVEL PACK
	PACK - DCT	PACK - MANUAL	ALUMINIUM	PLASTIC	PACK	ALUMINIUM	PLASTIC
	See below for the Part Numbers		08HME-MKS-L1ALU22	08HME-MKS-L1PL22	08HME-MKS-EL20	08HME-MKS-L1TRA22	08HME-MKS-L1PLTP
Radiator Grills	•	•					
Side Tank Pads	•	•					
Front Side Pipe	•	•	•	•		•	•
Engine Guard	•	•					
Rally Steps Set	•	•					
DCT Shift Pedal	•						
Quickshifter		•					
Smoked Windscreen	•	•					
Wheel Stripes set (in matching colours)	•	•					
Knuckle Guards (in matching colours)	•	•					
42 Litre Aluminium Top Box			•			•	•
Aluminium Panniers			•			•	
Inner Bag for Aluminium Top Box			•			•	
Inner Bags for Aluminium Panniers			•			•	
58 Litre Plastic Top Box				•			•
Plastic Pannier Set				•			•
Inner Bag for 58L Top Box				•			•
Inner Bag for Plastic Panniers				•			•
4.5 Litre Tank Bag			•	•		•	•
Front LED Fog Lights			•	•	•		
Heated Grips			•	•	•		
12V Socket			•	•	•		
High Windscreen			•	•			
Deflector set			•	•			
Visor set			•	•			
Main Stand			•	•		•	•
Red Version	08HME-MKS-L1RDCT	08HME-MKS-L1R22					
Black Version	08HME-MKS-L1BDCT	08HME-MKS-L1B22					
Tricolor Version	08HME-MKS-L1TDCT	08HME-MKS-L1T22					

X-ADV



ACCESSORIES

X-ADV



DID YOU KNOW? *Tougher than the rest!*

During the 2019 Gibraltar Race, a 4,000 mile all-terrain rally from Baltic Sea to Atlantic Ocean, Renato Zocchi steered an X-ADV to the Class 2 victory. This placed him in seventh overall for the event, beating out the competition of purpose-built dirt bikes and adventure tourers. While his X-ADV was specially prepared with extra wheel travel and ground clearance, Zocchi kept the standard footboards and simply used 'Gravel' mode on the DCT settings. Further proof that no matter where you want to go, the X-ADV is tougher than the rest to get you there!



X-ADV



LUGGAGE



PANNIER SET

08ESY-MKT-PNA

Set of 2 panniers with a 26 litre capacity on the right side and 33 litres on the left. The Honda 1-Key System allows the panniers to be operated using the main motorcycle key. Rear carrier and Aluminium Panels sold separately.

Maximum load capacity (each side): 6 kg

ALUMINIUM PANNIER PANELS

08L80-MKT-D00

Give your panniers the final touch with these Aluminium design panels (panniers sold separately).



PANNIER INNER BAGS SET

08L78-MKT-D00

Set of two inner bags that perfectly match the shape of the X-ADV panniers. Available in black with a discrete Honda logo, the inner bags also come with a shoulder strap making them easy to carry.



50 LITRE SMART TOP BOX

08ESY-MKT-STB50

50 Litre Top Box with SMART opening system allows the top box to be operated without having to insert a key. The built-in key cylinder can be used to lock the top box even when it is removed from the carrier and a backrest is included to improve passenger comfort. Rear carrier and Aluminium Panel sold separately.

Maximum load capacity: 6 kg



ALUMINIUM TOP BOX PANEL

08L83-MKT-D00

Give your 50 litre Top Box the final touch with this Aluminium design panel (top box sold separately).



50 LITRE TOP BOX INNER BAG

08L81-MKS-E00

Inner Bag specifically designed to fit the 50 litre Top Box. Made from waterproof material and equipped with straps that also allow it to be attached directly to your X-ADV. A shoulder strap is also provided allowing the bag to be carried easily.



CONSOLE BAG

08L79-MKT-D00

Perfectly fitting the space between the rider's knees, this Black 9 litre Console Bag is ideal for carrying your everyday essentials and features a convenient slot at the front for smartphone wires. Rain cover included.

Maximum load capacity: 2 kg



25 LITRE TOP BOX INNER BAG

08L77-MKT-D00

Top Box inner bag providing 25 litres of storage capacity and featuring the Honda logo. Easy to carry thanks to the provided shoulder strap.



ALUMINIUM REAR CARRIER

08L74-MKT-D00ZC

Rear Carrier with integrated grips for improved pillion comfort. Suitable for all sizes of top box.

Maximum load capacity: 10 kg



LED FOG LIGHTS

08ESY-MKT-FL21

These two additional LED Fog Lights provide increased visibility for the rider and helps make them more noticeable to surrounding traffic. Operated with the left handlebar switch, a signal appears on the TFT monitor when the lights are switched on. Must be mounted to the Front Side Pipe (Sold Separately).



LEG DEFLECTORS SET

08R71-MKT-D00

Featuring the X-ADV logo, the deflector set improves rider comfort by reducing air flow around the waist and thigh areas.



HEATED GRIPS

08T71-MKT-D00

Adjustable Heated grips featuring 5 temperature levels with the selected setting is displayed on the TFT monitor. When the ignition is switched off the most recent position is memorised and an integrated circuit protects the battery from draining.

COMFORT



FRONT SIDE PIPES

08P70-MKH-D00

Set of silver Side Pipes that protects the X-ADV's body and provide a mount for the Front Fog Lights (Sold Separately).



RIDER PEGS SET

08R72-MKT-D00

Improve your control while riding off-road and give your X-ADV the ultimate Adventure look with these Aluminium Rider Pegs.



KNUCKLE GUARD EXTENSIONS

08P72-MKS-E002C

Fitted to the standard knuckle guards, these extensions provide additional protection and comfort by reducing the airflow around the hands.



PARKING LEVER

08F70-MKT-D00

With its Anodised Black treatment, this Aluminium Parking Lever will help your X-ADV to stand out.

PARKING LEVER COVER

08F72-MKT-D00

Perfectly matching the aluminium lever, this lever cover will give your X-ADV a distinctive touch.



ALUMINIUM HANDLEBAR HOLDER

08F71-MKT-D00

Aluminium Handlebar holder featuring the X-ADV logo that reinforces the premium look of your X-ADV.



LATERAL COVERS SET

08F75-MKT-D00

Stainless steel covers that protect body panels from damage while maximising the premium appearance of X-ADV.



FLOOR PANELS

08F70-MKH-D00

Made of stainless steel with anti-slip pads and featuring the X-ADV logo, these floor panels will add to the durability of your X-ADV.

X-ADV



ACCESSORIES PACKS

CONTENT	TRAVEL	STYLE	ADVENTURE
	08HME-MKT-TRA22	08HME-MKT-STY	BLACK 08HME-MKT-ADTZB
50 Litre Top Box	•		
Aluminium Panel for Top Box	•		
Back Rest for Top Box	•		
Pannier Set	•		
Aluminium Panels for Panniers	•		
Rear Carrier	•		
Pannier Stay	•		
Console Bag	•		
Inner Bags for Panniers	•		
Heated Grips	•		
Handlebar Holder		•	
Parking Lever		•	
Parking Lever Cover		•	
Lateral Covers		•	
Floor Panels		•	
Knuckle Guard Extensions - Black			•
Front Side Pipe			•
Front LED Fog Lights			•
Leg Deflectors Set			•
Rider Pegs Set			•

NC750X



ACCESSORIES

NC750X



Do you really need a left lever to enjoy riding?

The Dual Clutch Transmission made its worldwide debut for motorbikes in 2010 with the Honda VFR1200F. Now entering its 3rd generation and downsized to suit mid-displacement bikes, the DCT is completely different from the belt-type transmissions used by most scooters: it is structurally a conventional 6-speed gear ratio transmission, yet electronically controlled when changing speeds. Keep the fun of a manual transmission, enjoy the comfort of an automatic one!



NC750 X





50 LITRE MANUAL TOP BOX

08L73-MKT-D00

50 Litre Top Box which can hold up to two helmets. The built-in key cylinder can be used to lock the top box even when it is removed from the carrier. Must be mounted with the Rear Carrier and Top Box Backrest (sold separately).

Maximum load capacity: 6 kg



ALUMINIUM TOP BOX PANEL

08L83-MKT-D00

Give your 50 litre Top Box a classy touch with this Aluminium design panel (Top Box Sold Separately).



REAR CARRIER

08L70-MKW-D00ZB

The rear carrier is required to fit the luggage items specifically designed for the NC750X. Two handles have also been integrated to maximise pillion comfort.

Maximum load capacity: 10 kg

LUGGAGE



50 LITRE TOP BOX BACKREST

08L85-MKT-D00

Designed to perfectly match the 50 litre Top Box, this backrest is made with optimal pillion comfort in mind. Easy fitment with no drilling required.



INNER BAG FOR 50 LITRE TOP BOX

08L81-MKS-E00

Made of a robust fabric, this waterproof inner bag features reflective strips and the Honda logo. It also comes equipped with straps that allow it to be attached directly to your bike and a shoulder strap making it easy to carry.



35 LITRE TOP BOX

08ESY-MKT-TB35OK

35 Litre Top Box which can accommodate most full-face Helmets. The Honda 1-Key System allows the top box to be operated using the main ignition key. Rear Carrier sold separately.

Maximum load capacity: 6 kg



PANNIER SET

08ESY-MKW-PNA

Set of 2 panniers specially engineered to match the design of your NC750X. The Honda 1-Key System allows the panniers to be operated using the main motorcycle key. Rear Carrier and Aluminium Panels sold separately.
Maximum load capacity (each side): 6 kg



ALUMINIUM PANNIER PANELS

08L80-MKT-D00

Give your panniers the final touch with these Aluminium design panels (panniers sold separately).



PANNIER INNER BAGS SET

08L78-MKT-D00

Set of two inner bags that perfectly match the shape of the NC750X panniers. Available in black with a discrete Honda logo, the inner bags also come with a shoulder strap making them easy to carry.

LUGGAGE



35 LITRE TOP BOX INNER BAG

08L75-MJP-G51

Black nylon Inner Bag featuring red zips and an embroidered Honda Wing logo. Expandable from 15L to 25L and features carrying handles as well as a shoulder strap allowing the bag to be carried easily.



TOP BOX BACKREST

08F00-MJP-G50

Designed to match the 35 litre Top Box, this backrest is produced with pillion comfort in mind and can be fitted easily with no drilling required. (Top Box sold separately).



HIGH WINDSCREEN

08R70-MKW-D00

The High Windscreen is 77mm higher than the standard screen and reduces the air around the rider's head and arms. Made of strong clear polycarbonate, it is a direct replacement for the standard screen.



HEATED GRIPS

08T70-MKW-D00

Extremely slim heated grips with smart heat allocation and a 5-level controller for maximum comfort. The last level selected is memorised when the bike's ignition is switched off and an integrated circuit protects the battery from draining.



FOOT DEFLECTOR SET (DCT)

08R70-MKW-D10

This set of Deflectors improves comfort by reducing the air pressure felt by the rider.

Manual version also available (08R71-MKW-D00)

COMFORT



FRONT SIDE PIPE

08P71-MKW-D00

The Front Side Pipe provides protection to exterior panels in case of contact and enhances the tough adventure styling of the NC750X. Required to fit the Front Fog Lights (sold separately).



FRONT LED FOG LIGHTS

08ESY-MKW-FL21

This set of two LED Fog lights increases rider visibility and makes the rider more noticeable to surrounding traffic. Must be combined with the Front Side Pipe (Sold Separately).



USB CHARGER

08E73-MKW-D00

Conveniently located in the luggage compartment, this Type-C USB charger provides 15W and allows you to power your electronic devices.



MAIN STAND

08M70-MKW-D00

The Main Stand allows secure parking on a variety of ground surfaces and assists with maintenance operations.



U-LOCK

08M53-MEE-800

U-Lock with a tamper-resistant barrel.

SECURITY & MAINTENANCE



NC750X

ACCESSORIES PACKS

PACKS	TRAVEL		URBAN		ADVENTURE	
	08HME-MKW-TR21	08HME-MKW-URB	08HME-MKW-ADTDCT	08HME-MKW-ADTMT	DCT	MT
50 Litre Top Box	•	•				
Aluminium Top Box Panel	•	•				
Top Box Backrest	•	•				
Pannier Set	•					
Aluminium Pannier Panels	•					
Pannier Stay	•					
Rear Carrier	•	•				
High Windscreen	•	•				
Heated Grips					•	•
Front LED Fog Lights					•	•
Front Side Pipe					•	•
USB Charger					•	•
Foot Deflector Set (DCT)					•	
Foot Deflector Set (MT)						•
Main Stand	•	•				

500X



ACCESSORIES

CB500X



DID YOU KNOW?

Pro-Link: from motocross to MotoGP race tracks

Brought to Motocross enthusiasts for the first time back in 1981, the Pro-Link rear mono-shock system patented by Honda is applied to many production models such as the CB500X but can also be found on the RC213V MotoGP race bike.



500X



REAR CARRIER

08L71-MGZ-D80ZA

Sturdy rear carrier with integrated pillion grab rails for added comfort. Not compatible with the Pannier Stay.



35 LITRE TOP BOX PACK

08ESY-MJX-TBWK

35 Litre Top Box designed to be operated using the main ignition key of the CB500X. This pack includes the rear carrier and base needed to mount the top box on the bike, as well as the key system.



PLASTIC PANNIER SET

08L70-MGZ-D80

Set of two aerodynamically shaped panniers specifically designed to fit the CB500X. Pannier Stay and key system sold separately.



FULL LUGGAGE PACK

08ESY-MKP-FL21

Equip your CB500X for long haul travel with this luggage pack including the 35 litre Top Box, Set of two panniers, key cylinders and mounting system.

LUGGAGE



35 LITRE TOP BOX INNER BAG

08L09-MGS-D30

Black Nylon Inner bag which is expandable from 15L up to 25L and features the Honda Wing logo on the front pocket. Comes equipped with a handle and shoulder strap for easy carrying.



3 LITRE TANK BAG

08ESY-MKP-TKB19B

Small bag for storing small personal items and specially designed to fit the CB500X tank. The bag features two magnetic flaps as well as two removable straps helping to keep it firmly attached at all times. Includes all required attachments for fitting.



REAR SEAT BAG

08ESY-MKP-SEAT

A simple and functional rear bag specifically adapted to the tapered shape of the rear seat. Easy attachment and stable mounting thanks to the provided attachment kit. Integrated zips allow the bag's capacity to be expanded from 15 Litres up to 22 Litres. Rain cover included.



FRONT LED FOG LIGHTS PACK

08ESY-MKP-FOG19

This set of two LED Fog lights Increases rider visibility and makes the rider more noticeable to surrounding traffic. This pack also includes the Front Side Pipe and Fog Light Attachment Kit providing everything required to fit the Fog lights to the CB500X.



HEATED GRIPS KIT

08ESYMKPGHX22

Slim heated grips with integrated control unit providing 360° heat around the grips. Features 3-step variable heating levels and an integrated circuit to protect the battery from draining. Attachment and heat-resistant glue included.



12V SOCKET

08U70-MKP-D80

12V Power Socket allows you to power or charge electrical equipment directly from the bike.

COMFORT



KNUCKLE GUARDS

08P70-MKP-DQ0

This pair of knuckle guards helps deflect wind and rain away from the rider's hands to increase comfort in all conditions.



SMOKED WINDSCREEN

08R70-MKP-J80

The smoked windscreen will help give your CB500X a sporty look. Direct replacement to the standard clear windscreen.



DEFLECTOR SET

08R71-MKP-J80

A set of Black deflectors that help to shield the rider's legs from the wind. Left and Right deflectors included.



PROTECTION



FRONT SIDE PIPE

08P72-MKP-J80ZA

The Front Side Pipe adds to the adventure styling of the CB500X while offering increased protection to front body panels. Required to fit Front LED Fog Lights (sold separately).



TANK PAD

08P70-MGH-J20

Helps to protect the tank from scratches.



500X



MAIN STAND

08M70-MKP-J80

The Main Stand allows secure parking on a variety of ground surfaces and assists with maintenance operations.



OUTDOOR MOTORCYCLE COVER

08P34-BC2-801

Protects paintwork against U.V. rays. Water-resistant breathable fabric that allows the bike to dry while covered. Two holes in the front lower area allow for a U-Lock to be easily fitted while the bike is covered. Not suitable for bikes with top box and/or panniers installed.

MAINTENANCE

ACCESSORIES PACK

CONTENT	COMFORT 08HME-MKP-CX22
Knuckle Guards	•
Deflectors	•
Heated Grips	•
12V Accessory Socket	•
Main Stand	•

CRF
300 RALLY



ACCESSORIES

CRF300L / RALLY



You've got the look and a bit more

When you see the images of the Honda riders racing for victory in the Dakar Rally, it's easy to spot the direct lineage between their CRF450 Rally and your CRF300. It's not only a matter of appearance but the ultimate proof that technology developed during the toughest races, can benefit everybody.



CRF
300 RALLY





35 LITRE TOP BOX PACK

08ESY-K1T-TB38

35 Litre Top Box with the Honda 1-Key System allowing it to be operated using the main ignition key. Pack includes 35 Litre Top Box & Base, Rear Carrier and Key System. All components also available separately.



35 LITRE TOP BOX INNER BAG

08L75-MJP-G51

Black Nylon Inner Bag that can be expanded from 15L up to 25L and features an embroidered Honda Wing logo. Includes both handles and a shoulder strap allowing the bag to be carried easily.



SKID PLATE

08P70-K1T-E50

Made of 4mm thick aluminium, the Skid Plate improves the protection of the engine and the lower section of the bike.

(Only applicable on CRF300L)



The specific details of this brochure do not apply to any particular product supplied or offered for sale. Manufacturers reserve the right to vary specifications, including colours, with or without notice at such times in such manner as deemed appropriate. Major as well as minor changes may be involved. Every effort, however, is made to ensure the accuracy of the particulars contained in this brochure. Consult your Dealer for details regarding the specifications of any featured product. This publication shall not constitute - under any circumstances whatsoever - an offer by the Company to any individual. All sales are made by the Distributor or Dealer subject to and with the benefit of the standard Conditions of Sale and Warranty provided by the Distributor or Dealer, copies of which may be obtained upon request. While efforts are made to ensure specification accuracy, brochures are prepared and printed several months in advance of distribution and consequently cannot always immediately reflect either changes in specification or in some isolated cases the provision of a particular feature. Customers are always advised to discuss specific details with the supplying Dealer, especially if a selection is dependent upon one of the features advertised. Please contact your local dealer for information and specifications. Please note that the fuel consumption figures provided are results obtained by Honda under standardised testing conditions prescribed by WMTC. Tests are conducted on a rolling road using a standard version of the vehicle with only one rider and no additional optional equipment. Actual fuel consumption may vary depending on how you ride, how you maintain your vehicle, weather, road conditions, tyre pressure, installation of accessories, cargo, rider and passenger weight, and other factors. You accept that if you do go ahead and make a purchase or enter into any kind of transaction, whether for payment or not, you did so entirely in reliance on your own skill and judgement and not on that of anyone else.

RIDE WITH STYLE Read the owner's manual thoroughly. Get to know your machine and its capabilities. Concentration assists anticipation. Observe other road users' movements. Brake in plenty of time. Always wear a helmet and quality kit, ride fit and NEVER after drinking alcohol. Good roadcraft and courtesy identify the skilled and stylish rider. Honda endorse the law that all helmet visors must comply with BS 4110. Visors that transmit less than 50% of visible light cannot legally be used on the road.

Honda (UK) - Motorcycles

Cain Road, Bracknell, Berkshire, RG12 1HL England

honda.co.uk



Please don't bin me.
Pass me on to a
friend or recycle me.

Honda Motor Europe sources
paper responsibly from
manufacturers within the EU.



BLUE SKIES FOR
OUR CHILDREN